

# Invisible Fixing: gluing



Hardie® Panel and  
Hardie® Architectural Panel  
Invisible Fixing Solutions by gluing



**JamesHardie™**



## Hardie® Panel family

Hardie® Panel and Hardie® Architectural Panel facade claddings are medium-density fibre cement panels, specifically engineered to meet the European climate conditions. With their unmatched design flexibility in combination with affordability, they are the go-to ventilated facade cladding solution for renovation or new built. Not only built to last, they are also optimized for low resource use and related CO<sub>2</sub> emissions.

In combination with the Innotec® gluing solution, they are the perfect match for individual facade design with invisible fixing. Tested and certified B-s1, d0 fire performance.

## Endless design possibilities

Hardie® Panel and Hardie® Architectural Panel are some of the most innovative products when it comes to fibre cement cladding. It does not only impress with performance but is also a real design all-rounder: pick any of our amazing colours, choose a texture, and make every project individual.

Hardie® Panel comes in a natural fibre cement surface with 5 standard colours from white to black. Hardie® Architectural Panel is available in two textures, brushed concrete, and smooth sand, both available in 6 standard colours.

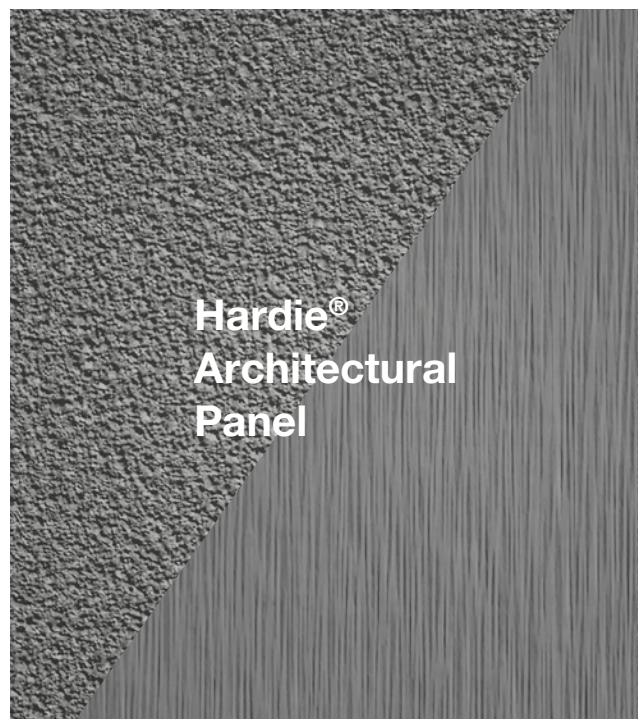
For all products, custom coating is possible in almost any colour.

For the most neatest look of an invisible fixing, James Hardie has partnered up with Innotec®. With their state-of-the-art system components, Hardie® facade cladding can be glued to aluminum sub-frames without the need to apply any visible fixings.

Innotec® can be contacted for detailed consulting, material planning, and access to certified installers or to become a certified installer.

## Introducing the self-supporting, invisible fixing solution with Innotec® and Hardie® Panel and Hardie® Architectural Panel

- Design freedom
- Fast, easy, and cost-efficient installation
- Fire certification: B-s1, d0
- Uniform stress distribution through the whole facade panel
- High wind load resistance compared to traditional fixing
- Weather and aging resistant bonding





## Components and Tools

### Innotec® Multisol Project – Cleaner



For cleaning and preparation of the sub-frames and Hardie® Panel.

### Innotec® Fixation Tape Project 2100



To apply on the sub-frame to ensure a direct adhesion of the Hardie® Panel facade claddings.

### Innotec® Multisol Cleaning Wipes



Used in combination with the Multisol Project Cleaner.

### Innotec® Adheseal Project and cartridge tip



Adhesive to apply on the sub-frame.

### Innotec® Accu Gun



For the application of Adheseal Project

### Innotec® Imprisol Project - Primer



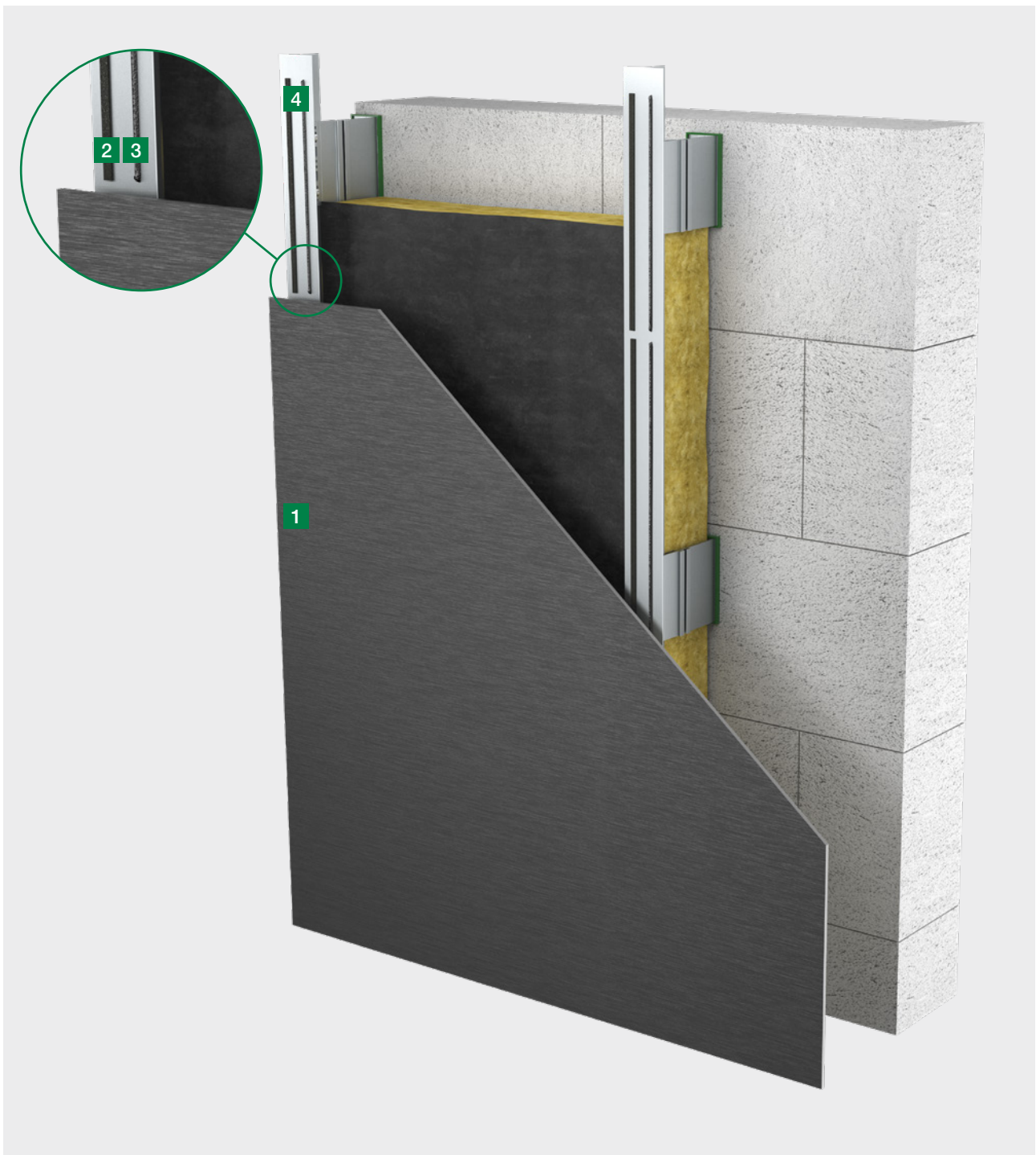
Special primer for preparation of the backside of the Hardie® Panel to ensure proper adhesion.

### Innotec® Applicator and sponge



For applying the primer on Hardie® Panel and cartridge tip.

## Concept and Installation Instructions

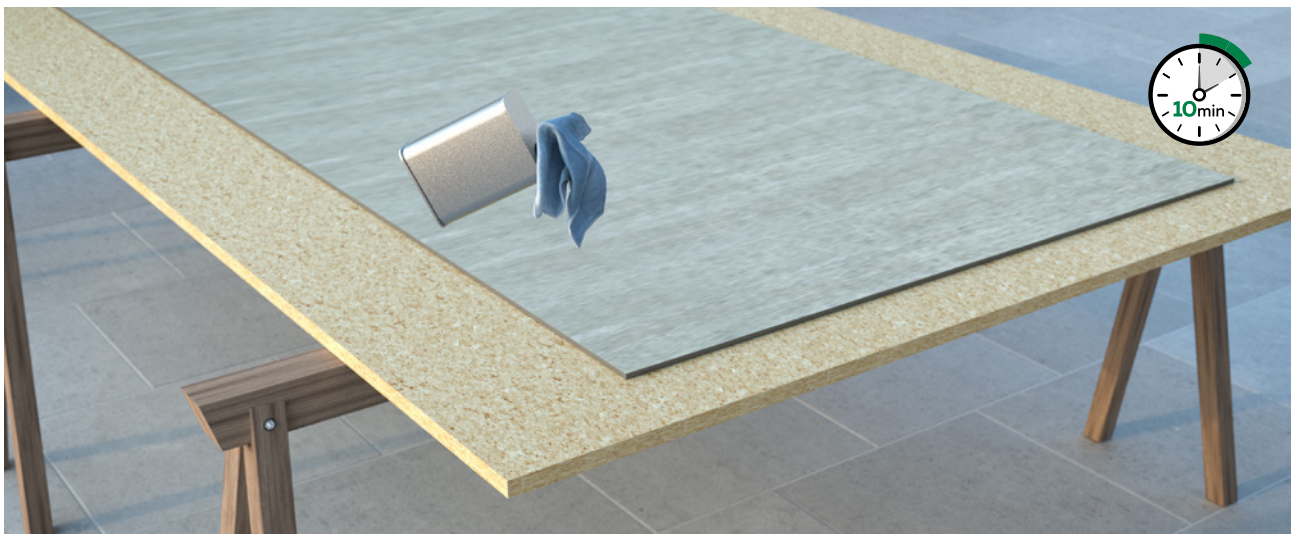


- 1 Hardie® Panel or Hardie® Architectural Panel
- 2 Innotec® Fixation Tape Project 2100
- 3 Innotec® Adheseal Project, 8 mm width
- 4 Sub-frame

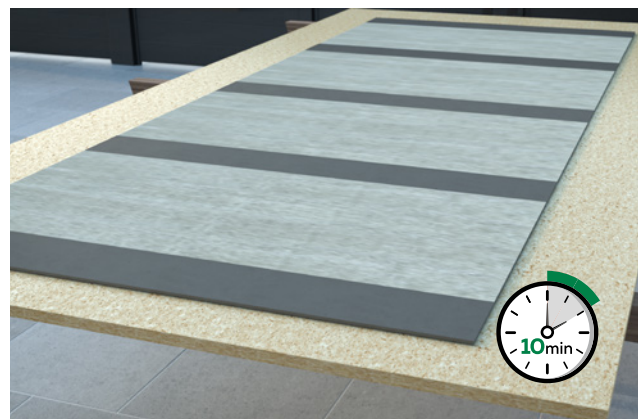
Final invisible fixing system glued on aluminum sub-frames with the Innotec® facade gluing system and Hardie® Panel facade cladding.



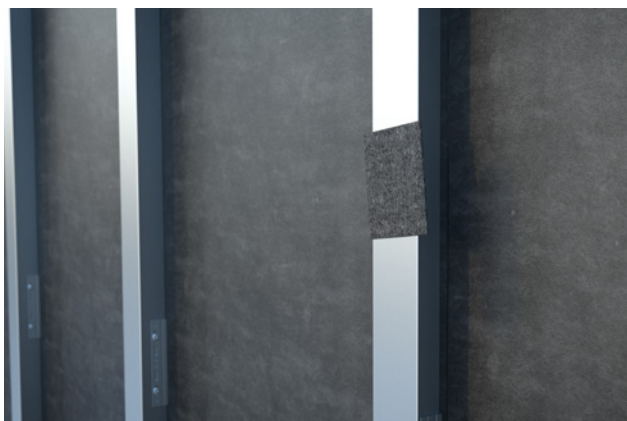
## Installation



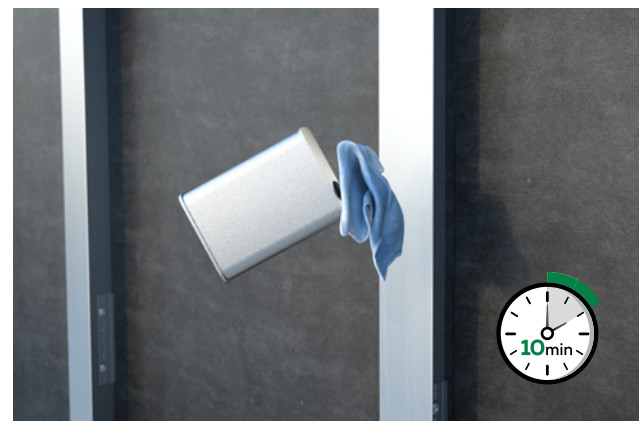
1. Mark the distance of the sub-frames and clean the areas of the backside of the Hardie® Panel where it will be glued – Note time to ensure a waiting time of 10 minutes before applying the primer.



2. Apply Innotec® Imprisol Project Primer on the cleaned areas of the backside of the Hardie® Panel - Waiting time 10 minutes.



3. Prepare the aluminum sub-frame by using a sanding fleece for cleaning.



4. Cleaning the sub-frames with Innotec® Multisol Project – Note time to ensure a waiting time of 10 minutes before the next step at the sub-frame.



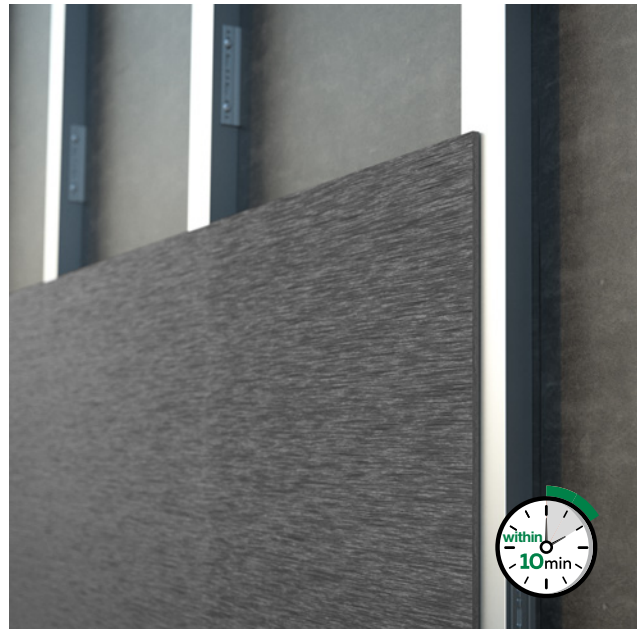
5. Attach the Innotec® Fixation Tape Project 2100 to the sub-frames. The tape should be aligned towards the joint, leaving sufficient space for the Innotec® Adheseal Project adhesive triangle (8 mm), see 9 for the correct alignment.



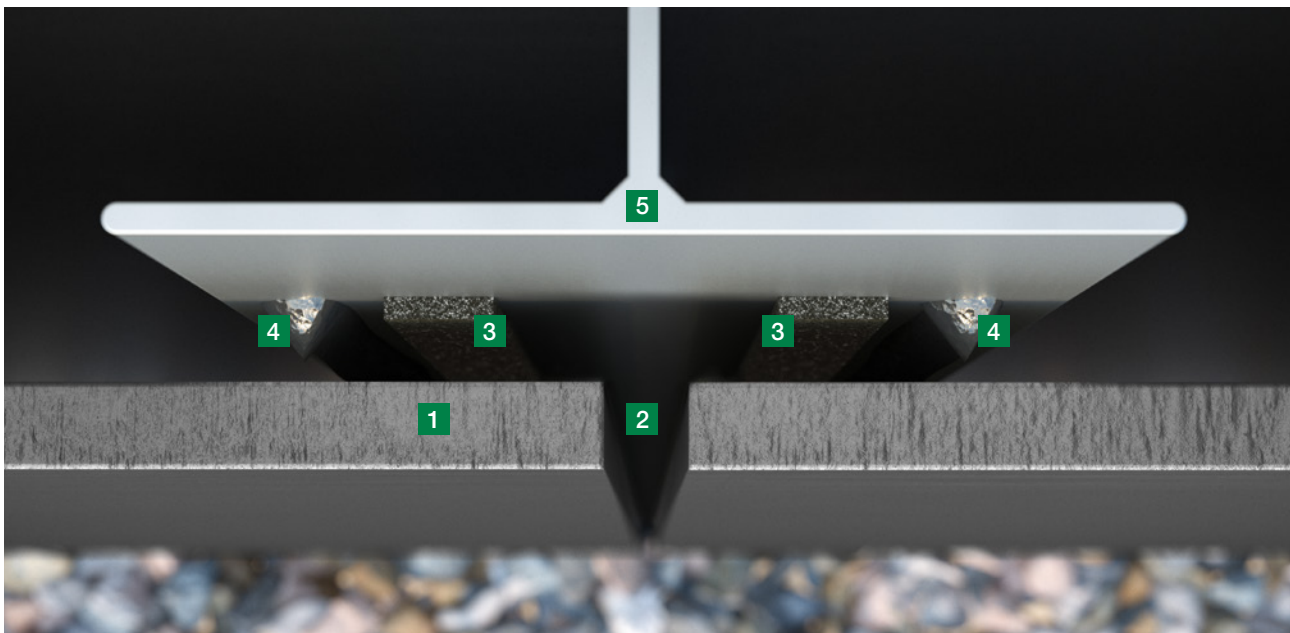
6. Apply Innotec® Adheseal Project adhesive onto the sub-frame with the accu gun. Ensure a proper positioning and share of the tape and adhesive. Leave 10 mm distance between the fixation tape and the side of the sub-frame.



7. Remove the protection layer from the tape.

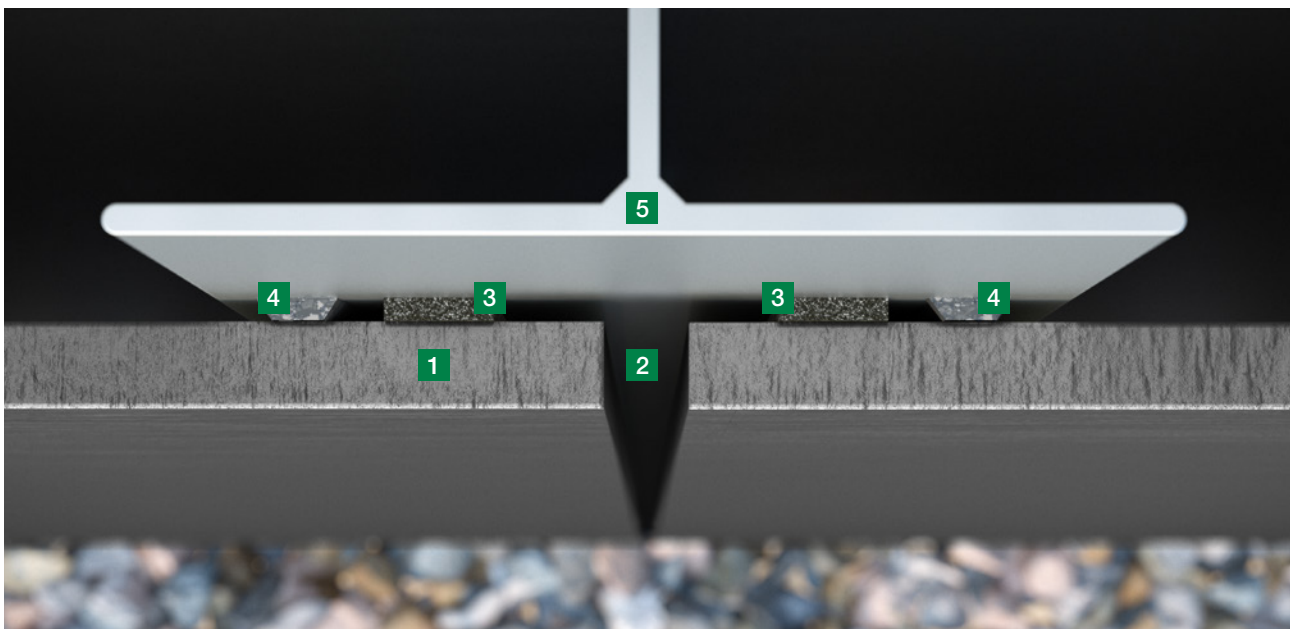


8. Attach the panel to the sub-frames within 10 minutes after application of the adhesive, and press firmly. Ensure to keep the minimum distance of 8mm between each panel and use a level device to ensure proper alignment.



#### 9. Preparation:

When applying the Innotec® Adheseal Project adhesive, leave 10 mm to the fixation tape and the edge of the sub-frame. When applying the Innotec® fixation tape, keep a sufficient distance to the edge (2x 5 mm) and the adhesive (8 mm). On sub-frame elements below a joint, the tape is to be applied on the inside, and the Innotec® Adheseal Project adhesive on the outside from the middle. A joint of 8 mm is recommended.



#### 10. Final adhered panel to the sub frame.

Ensure to check the latest information from Innotec regarding installation conditions suitable for the adhesive application. Training for installers is offered by Innotec®.

- 1 Hardie® Panel or Hardie® Architectural Panel
- 2 Joint, 8 mm
- 3 Innotec® Fixation Tape Project 2100
- 4 Innotec® Adheseal Project, 8 mm width
- 5 Sub-frame



© 2023 James Hardie Europe GmbH. ™ and ®  
designate registered and unregistered trademarks  
of James Hardie Technology Limited and  
James Hardie Europe GmbH.  
Last updated 12/2023

Hardie® Panel and Hardie® Architectural Panel are  
also compatible with most facade gluing systems  
available on the market.



**James Hardie Europe GmbH**

Export Department  
Bennigsen-Platz 1  
40474 Düsseldorf  
Germany  
[www.jameshardie.eu](http://www.jameshardie.eu)

**Contact Information:**

Phone: +49 211 54236-200  
E-mail: [fermacell-exportcenter@jameshardie.com](mailto:fermacell-exportcenter@jameshardie.com)

har-400-00008/12.23/m

